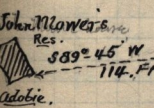
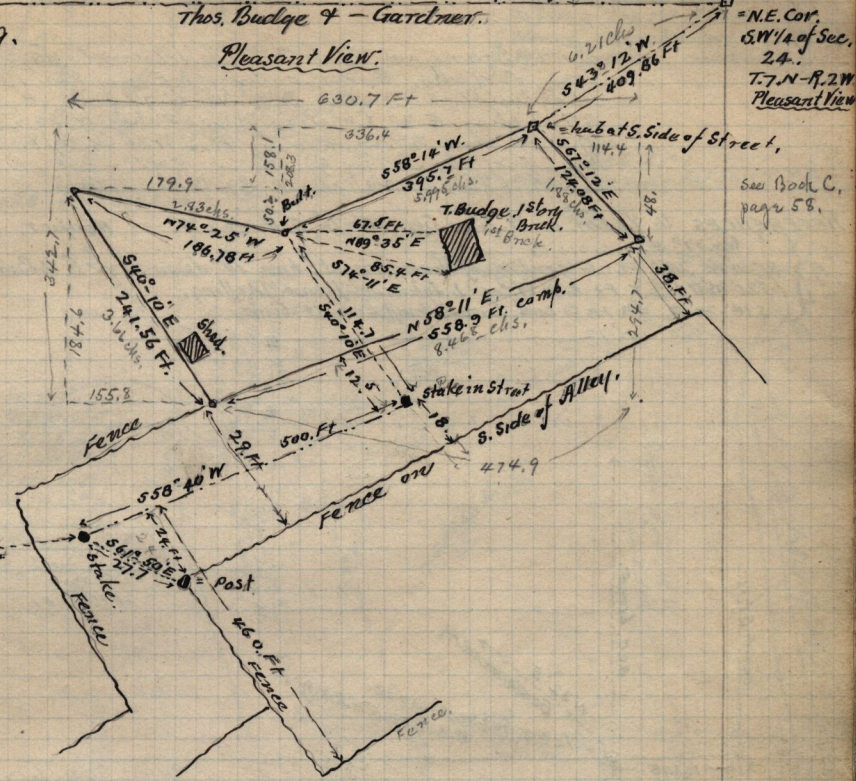


March 13<sup>th</sup> 1896. Survey made for  
Thos. Budge & - Gardner.

Pleasant View.

N<sup>o</sup> 19.



N<sup>o</sup> 19-

Corrected description issued to Thos. Budge. Pt. S.W. 1/4 of Sec. 24. T. 7. N. - R. 2. W. Beg. at point 6.21 chs 543° 12' W. from N.E. Cor. S.W. 1/4 Sec. Thence 558° 14' W. 5.995 chs. N74° 25' W. 2.83 chs; 540° 10' E 3.66 chs; N 58° 11' E 8.468 chs. to Beg. 1.41 a. more or less.

13-80, D.H. Peery Jr to D.H. Peery Sr.  
Pt Lot 6, B. 9 - P. B. OCS Beg. N.W. cor.  
E. 180.14 S 132. W. 180. N 132' to beg.

28-2 John R. Morris to David Stanger Feb. 21-1896.  
Pt S.W. 1/4 Sec. 13, T. 6. N. - R. 2. W. Beg. 10.61 chs N  
39 1/2° W. and 19.08 chs N. 1/4 S.E. Cor. rd 1/4 Sec.  
789 ft. along cent. st. 3.29 chs thence N. to cent.  
mill creek, E. along chan. creek to  
point 15.45 chs N. of pt. 1 1/2° of line.  
S 11° E. 15.45 chs to beg. 5 a. more or less

James B. Morris to Ellen Morris, Oct 5-1895.  
Pt S.W. 1/4 Sec. 13, T. 6. N. - R. 2. W. - 1895, 3.62 chs E. of N.W. cor  
at 1/4 Sec. S 1° W. 20. W chs to cent. st. 389 1/2° E 2.50  
chs. N. to cent. Mill Cr. W. along chan. creek to N. an  
1/4 Sec. N. to beg. 5 a. more or less.